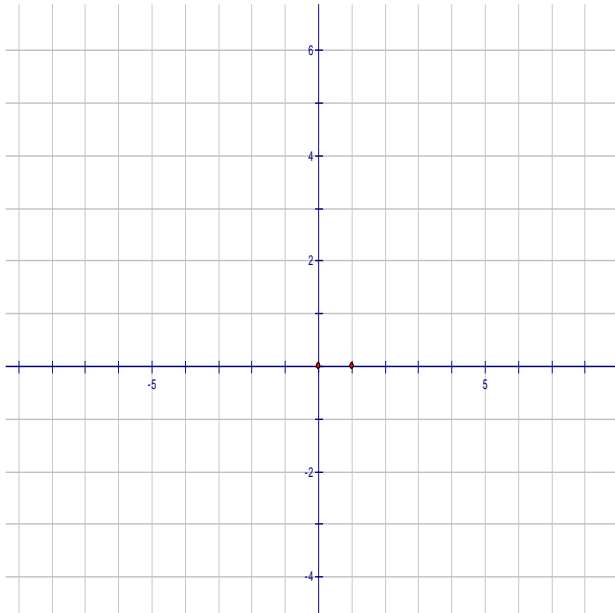


Name: _____

Due Date: Tuesday June 2nd

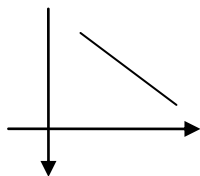
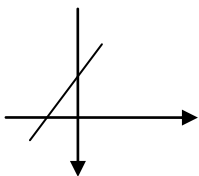
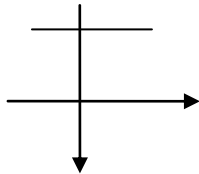
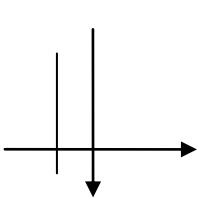
1. Sketch the graphs of the following, using the gradient and y-intercept method:

- a. $y = 2x - 1$ b. $y = -x + 3$ c. $2y - x = 4$



(2+2+3)

2. State whether the following gradients are positive, negative, zero or undefined.



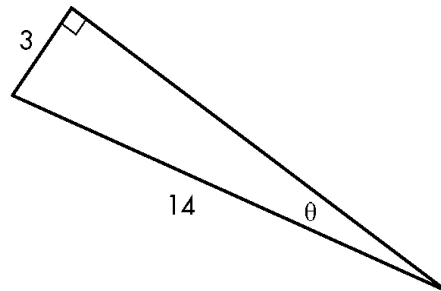
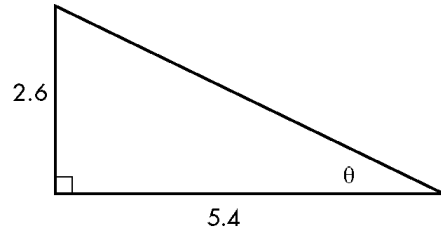
(4)

3. State the gradient and y-intercept of the following equations

- a. $y = -7x + 4$
 b. $-3 + 2x = y$
 c. $y - 5x + 1 = 0$

(6)

4. Find the value of the marked angle



(4)

5. A yacht sails 64 km on a bearing of 165° T. How far south is the yacht from its starting position?

(3)