

HOMWORK 9 Term 1 Sheet 4 Advanced

1. Expand & simplify:

$$3(2x-5) + 2(4-x)$$

=

$$(x+7)(x-5)$$

=

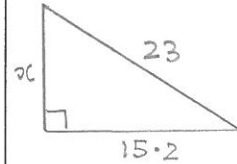
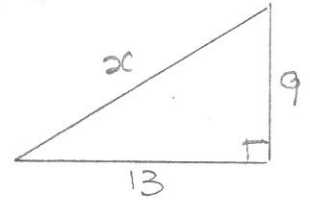
2. Simplify:

$$\sqrt{200} =$$

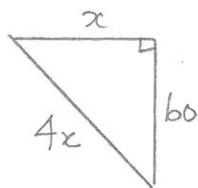
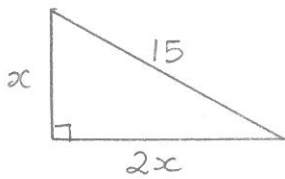
$$\sqrt{x^4 y^3} =$$

$$\sqrt{50a^2} =$$

3. (2 d.p.'s)



4. (exact)



5. Which base triad do these come from

$$30, 40, 50$$

$$14, 48, 50$$

$$2.5, 6, 6.5$$

6. Simplify:

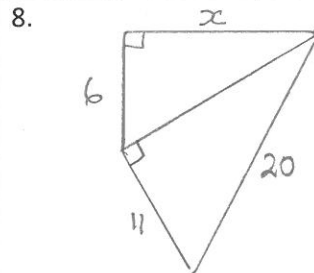
$$\frac{2\sqrt{5} \times 3\sqrt{10}}{6\sqrt{2}}$$

=

7. Rationalise denominator.

$$\frac{8\sqrt{5}}{\sqrt{2}}$$

=



9. My scores for tests are 6, 10, 4 and 8. To average 7 overall, what must I score on my next test?