

HOMEWORK 9 Term 1 Sheet 5 Advanced

1. Expand & simplify:

$$(x+6)(x-5)$$

=

$$(x-9)(x-2)$$

=

2. Simplify:

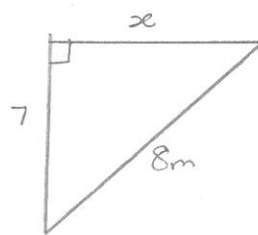
$$\sqrt{27} + \sqrt{300}$$

=

$$\sqrt{125} + \sqrt{225}$$

=

3. Find x (exact)



Find perimeter (2 d.p.'s)

4. Expand & simplify:

$$4(3x+5) - 2(4-2x)$$

=

5. Rationalise denom. & simplify:

$$\frac{10}{\sqrt{5}}$$

=

6. Evaluate:

$$6\sqrt{64} - 2\sqrt{81}$$

=

$$(3\sqrt{7})^2$$

=

7. Find the base triad

$$3.5, 12, 12.5$$

Find x :

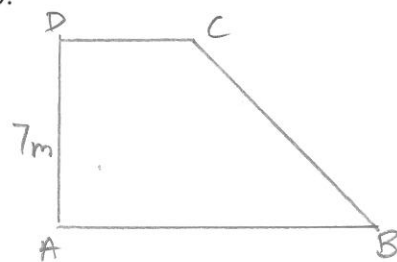
$$60, x, 100$$

8. Find x :

$$\sqrt{x} = 1\frac{1}{4}$$

write your answer as a mixed number.

9.



$$\overline{CB} = 10 \quad \overline{CD} = 5$$

Find \overline{AB} (2 d.p.'s)