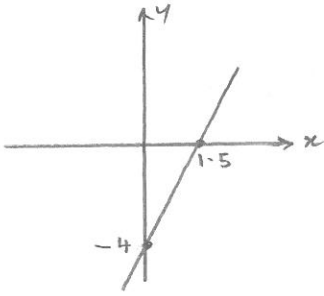


HOMEWORK 9 Term 4 Sheet 5 advanced

1. Find the equation:



2. Find the equation of a line that passes through (4, -3) and (1, 3)

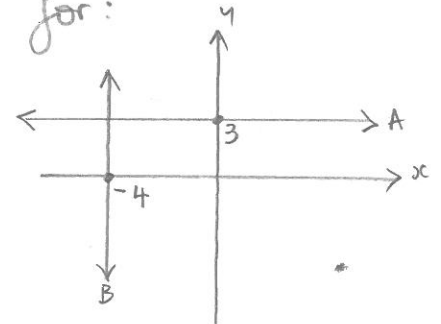
3. Sketch showing all intercepts

$$2x - 3y = 12$$

4. A line perpendicular to $y = \frac{2}{5}x - 7$ has a gradient of?

5. How many units is it from: (-2, 5) to (3, -7)?
Answer to 2 dec places.

6. Write the equations for:



A:

B:

7. Is (-3, -2) on the line $y + 2x + 7 = 0$?

8. What are the coordinates of the midpoint between (-8, -5) and (2, -1)

9. Find k if:
 $2y = 12 - 3x$ and
 $3y = 6 + kx$
are perpendicular